

# THE DISTINCTIVE HOME

*A Vision of Timeless Design*



JEREMIAH ECK



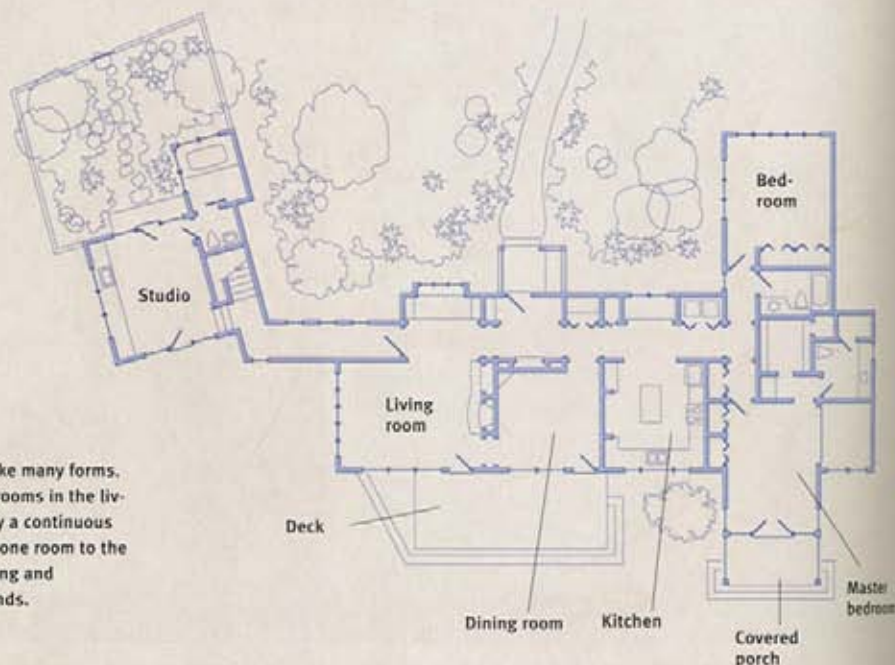
# One Hallway, Lots of Rooms

**T**he central hallway that runs the length of this comprehensive floor plan is its strength. The hallway is the major artery through the main house and connects the separate studio wing. A series of doors, columns, and beams along the length of the hall act like gates that signify passage from one area of the house to another, helping integrate what could have been a jumble of small rooms with no real connection to each other.

In this plan, the kitchen, dining, and living rooms are single-loaded—they are off one side of the hall. The bedrooms are double-loaded, being off both sides of the hall at the end of the corridor. This means that access to each public room is through another room—by passing through a common door—or off the hall. And because they are tucked at the end, each bedroom has more privacy.

One of the big advantages of a single-loaded floor plan is that it keeps the house narrow along the axis of the hallway, opening up more opportunities for natural light, cross-ventilation, and a sense of the site in a number of directions.

The combination of custom windows, wood siding, and carefully detailed exterior trim gives this single-story house a comfortable fit on its site. A covered porch off the master bedroom (at right) offers another connection to the outdoors.



Comprehensive plans can take many forms. In this example, a series of rooms in the living wing are tied together by a continuous corridor, or a passage, from one room to the other, while the bedroom wing and attached studio are at the ends.





**Nooks, columns, beams, doors, and even a house "altar"** break up the interior space without carving it up into separate rooms. Walking through the central hallway is akin to passing through a series of gates, and each area is exposed to the outdoors.



**A two-story studio,** added on after the original house was built, is connected to the main house by extending the central hall. Vertical board-and-batten siding defines the second floor as separate from the shingled first floor.