

First Floor

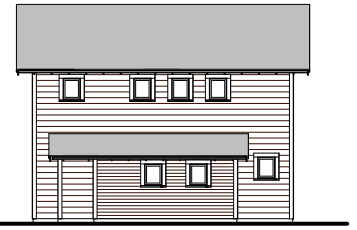
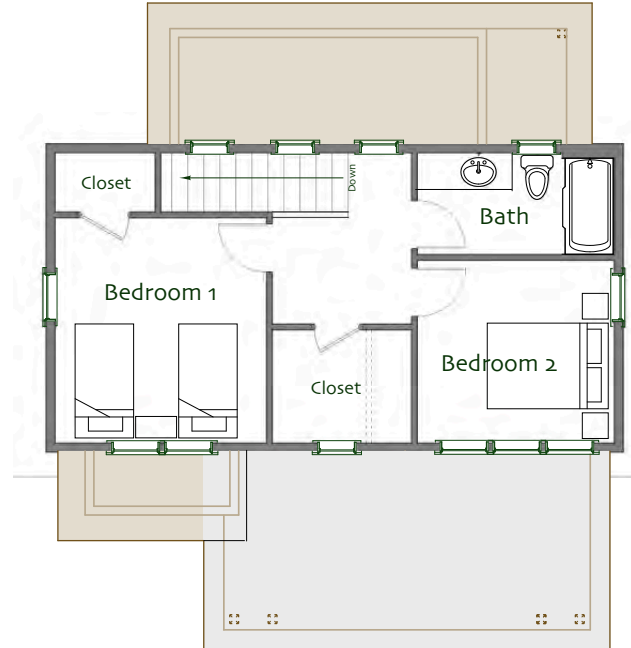
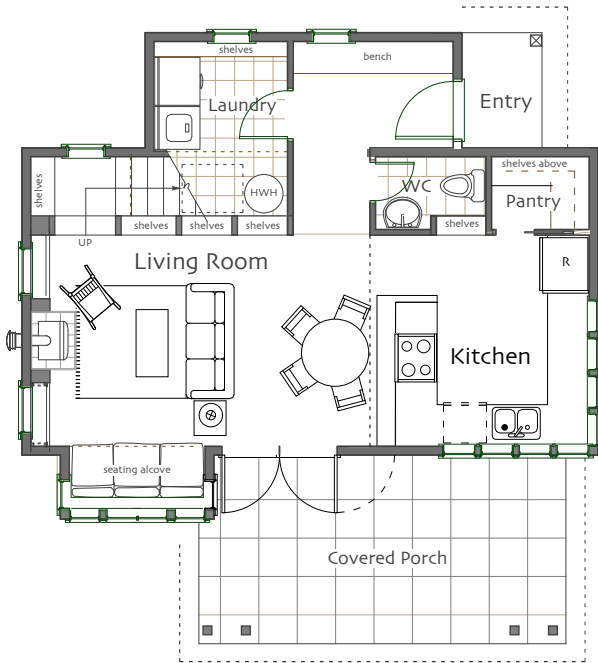
Living/Dining 17'-9" x 11'
Kitchen 11' x 11'-3"
Utility Room 7' x 5'-6"
Bathroom half

Second Floor

Bedroom 1 11' x 11'-6"
Bedroom 2 10'-3" x 9'-6"
Bathroom full

Total Heated Area 1086 sq ft

Footprint 30' x 31'



© Ross Chapin Architects • Sizes are approximate / Plans are subject to change



Cottages and Small Houses
PO Box 230 • Langley, Washington 98260 • plans@rosschapin.com • www.rosschapin.com

Brightside House