

First Floor: 903 sf

Living Room	15'-6" x 17'-6"
Kitchen/Dining	24' x 12'-6"
Study	11'-6" x 17'-6"
Bathroom	half w/Laundry
Mudroom	10' x 8'

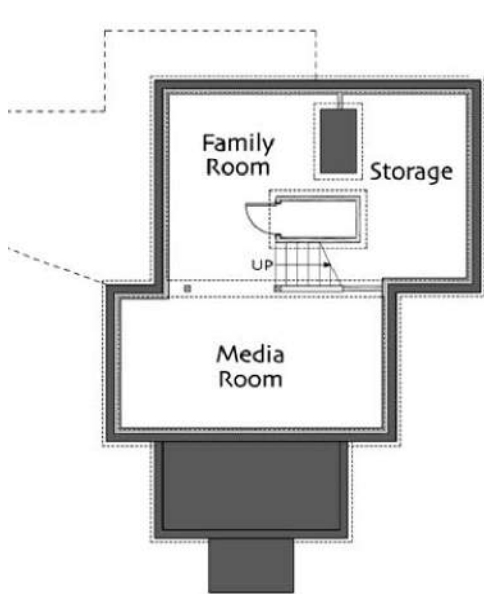
Second Floor: 670 sf

Bedroom 1	19' x 9'-6"
Bedroom 2	19' x 9'-6"
Bathroom	full

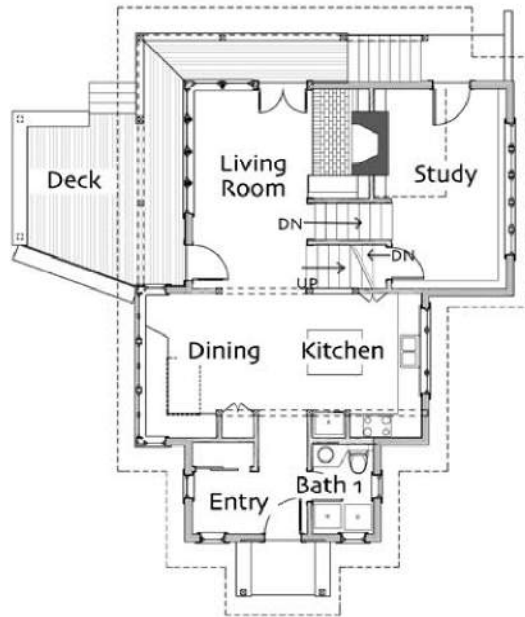
Basement: 574 sf

Total Heated Area: 2147 sq ft

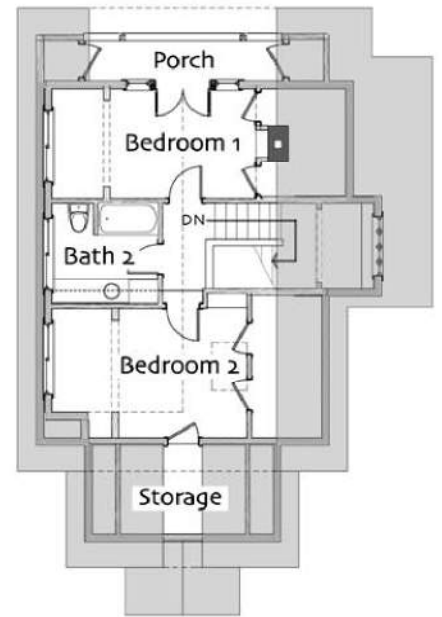
Footprint
(doesn't include deck) **31' x 47'**



Basement



First Floor



Second Floor



© 2020 Ross Chapin Architects • Sizes are approximate / Plans are subject to change

The GoodFit Collection

Cottages and Small Houses

PO Box 1595 . Langley, Washington 98260 . hello@goodfitplans.com . www.goodfitplans.com

Three Gable