

**First Floor**

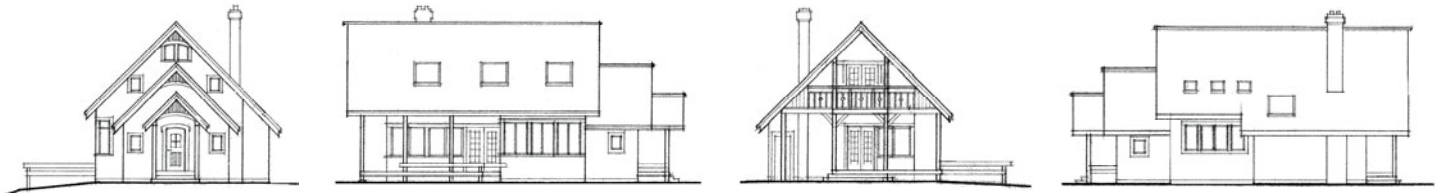
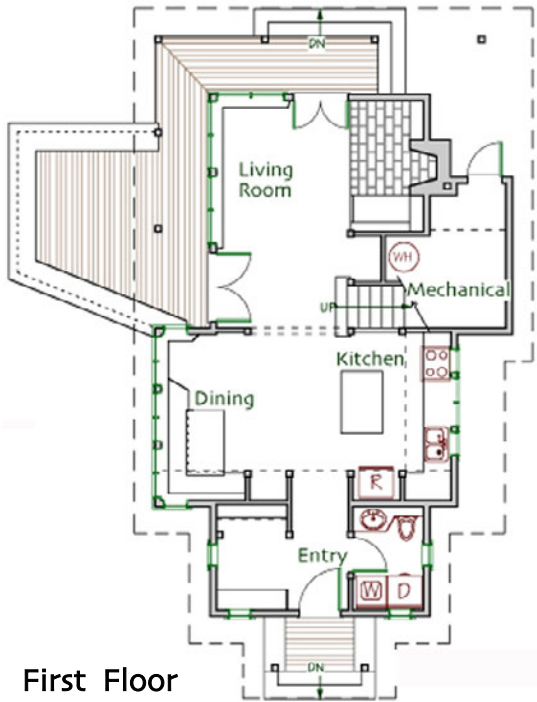
Kitchen/Dining 20' x 12'  
 Living Room 15' x 16'  
 Bath half w/Laundry  
 Mudroom 5' x 7'-6"  
 Utility Room (below)

**Second Floor >5'**

Bedroom 1 15' x 10'  
 Bedroom 2 15' x 10'  
 Bath full

**Total Heated Area 1100 sq ft**

**Footprint 36' x 47' with deck**



© Ross Chapin Architects • Sizes are approximate / Plans are subject to change