

First Floor

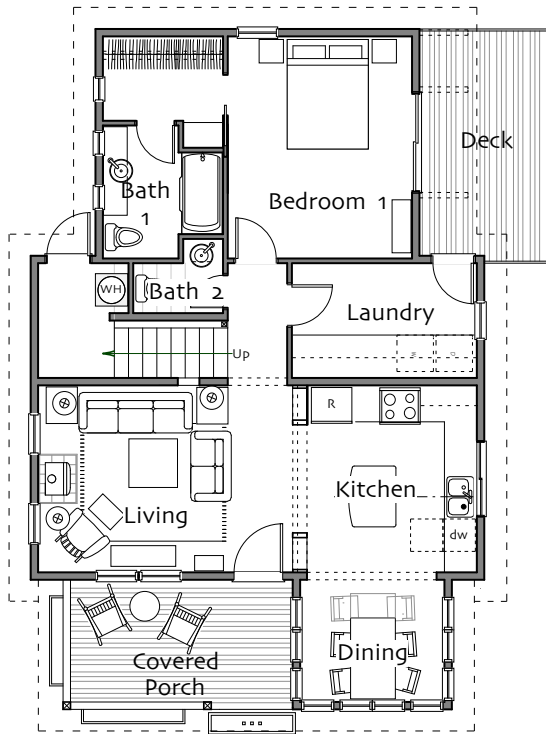
Living Room	15'-6" x 11'-6"
Kitchen	10'-6" x 11'-9"
Dining Room	8'-9" x 7'
Bedroom 1	11'-4" x 13'-9"
Laundry	7' x 11'-6"
Bathroom 1	full
Bathroom 2	half
Covered Porch	14' x 8'

Second Floor >5'

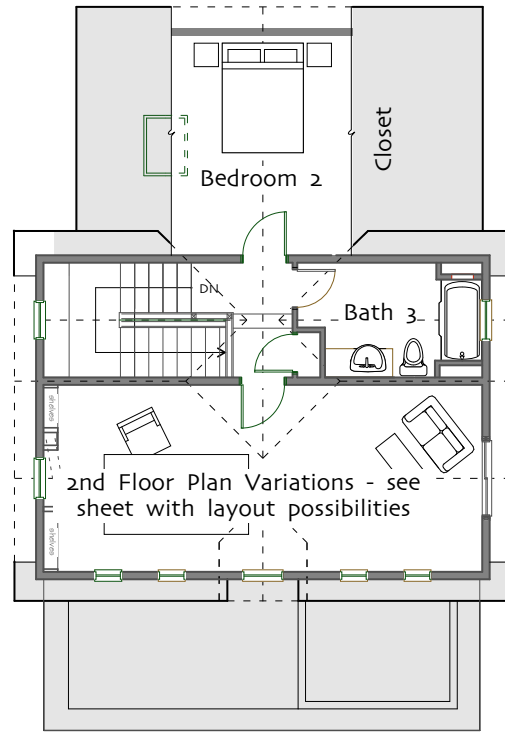
Bedroom 2	13' x 13'-6"
Studio/Bedroom 3	11'-6" x 27'
Bathroom 3	full

Total Heated Area: 1662 sq ft

Footprint 32' x 42'



First Floor



Second Floor



© Ross Chapin Architects • Sizes are approximate / Plans are subject to change



Cottages and Small Houses

PO Box 230 • Langley, Washington 98260 • plans@rosschapin.com • www.rosschapin.com

Plumrose