

First Floor

Living Room 12' X 14'
 Kitchen 12' X 14'
 Dining Room 8' X 9'
 Bedroom 1 14' X 13'
 Bathroom 1 full
 Bathroom 2 half
 Covered Porch 8' X 14'

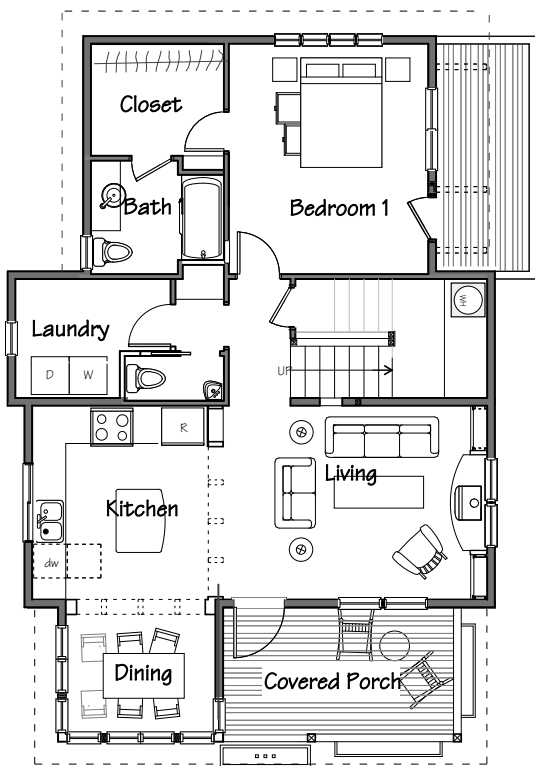
Second Floor >5'

Bedroom 2 12' X 14'
 Bedroom 3 11'-6" X 16'
 Bathroom 2 full
 Bathroom 3 three-quarter

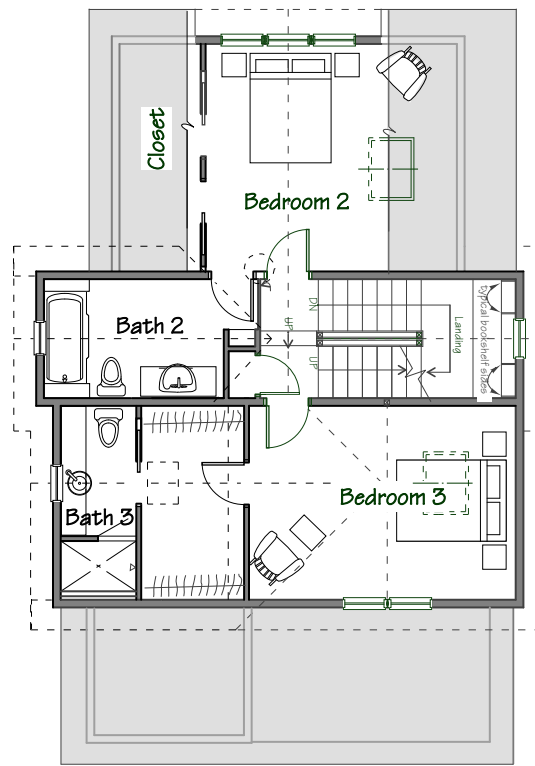
Tower Room 7' x 7'

Total Heated Area 1774 sq ft

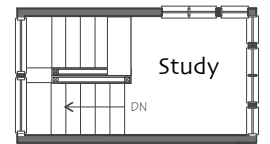
Footprint 32' x 42'



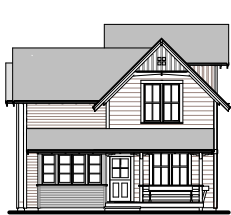
First Floor



Second Floor



Third Floor



© Ross Chapin Architects • Sizes are approximate / Plans are subject to change