

**First Floor**

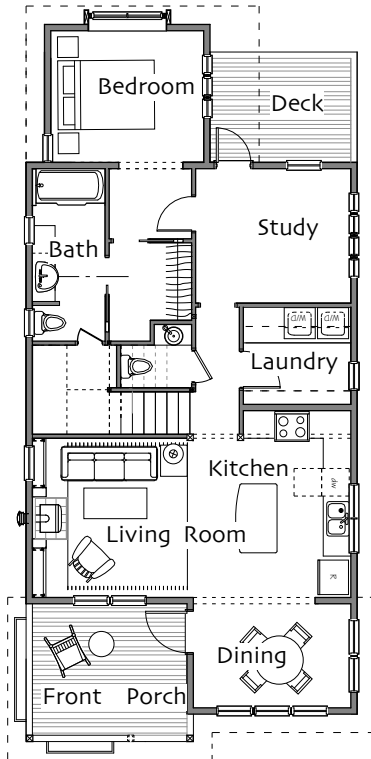
Living Room 12' x 11'-6"  
 Kitchen 11'-6" x 11'-6"  
 Dining Room 11'-6" x 8'-6"  
 Bedroom 11" x 9'-6"  
 Study 9'-6" x 11"  
 Laundry 7' x 7'-9"  
 Bath full  
 WC half

**Second Floor** >5'

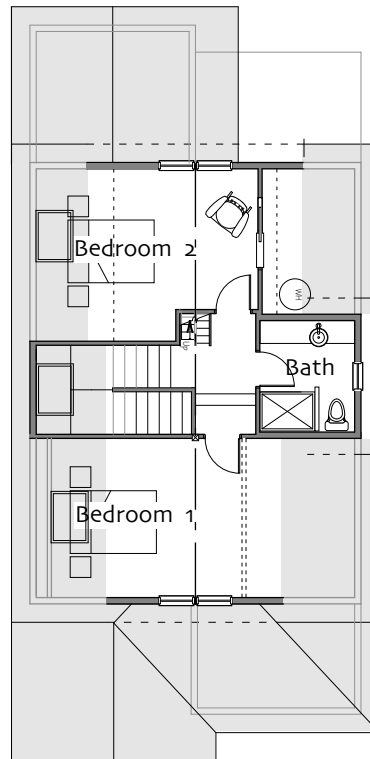
Bedroom 1 10'-8" x 11'-6"  
 Bedroom 2 13'-4" x 12'-6"  
 Bathroom three-quarter

**Total Heated Area** 1572 sf

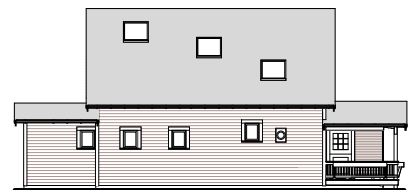
**Footprint** 24' x 52'



**First Floor**



**Second Floor**



© Ross Chapin Architects • Sizes are approximate / Plans are subject to change