

First Floor

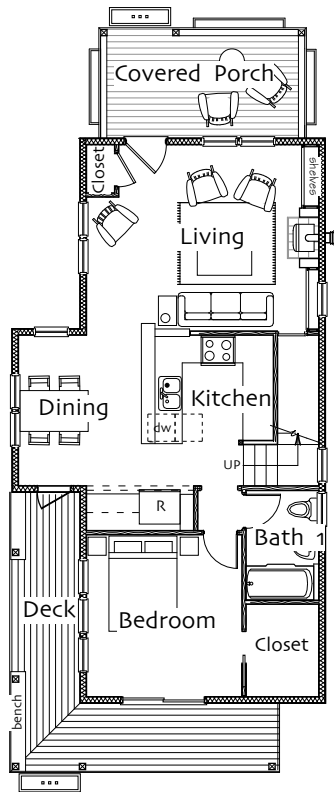
Living Room 13'-6" x 17'
Kitchen/Dining 14'-3" x 18'-9"
Bedroom 1 11'-6" x 12'
Bathroom 1 full

Second Floor >5'

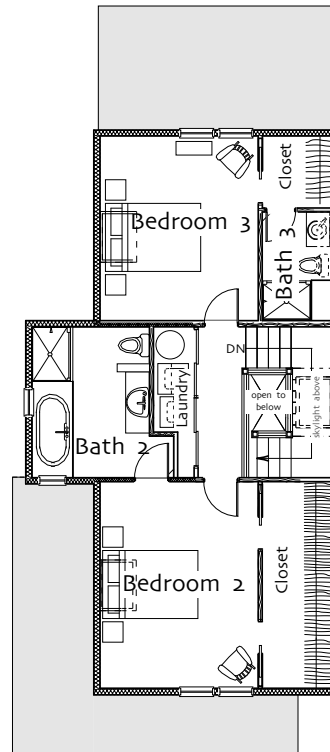
Bedroom 2 11'-6" x 15'
Bedroom 3 11'-6" x 13'-6"
Bathroom 2 full
Bathroom 3 three-quarter
Laundry 3' x 7'-9"

Total Heated Area 1606 sq ft

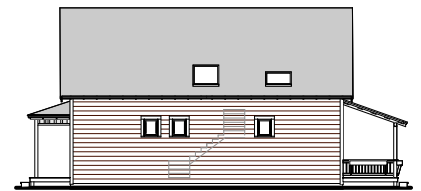
Footprint 23' x 55'



First Floor



Second Floor



© Ross Chapin Architects • Sizes are approximate / Plans are subject to change



PO Box 230 • Langley, Washington 98260 • plans@rosschapin.com • www.rosschapin.com

Karina