

First Floor

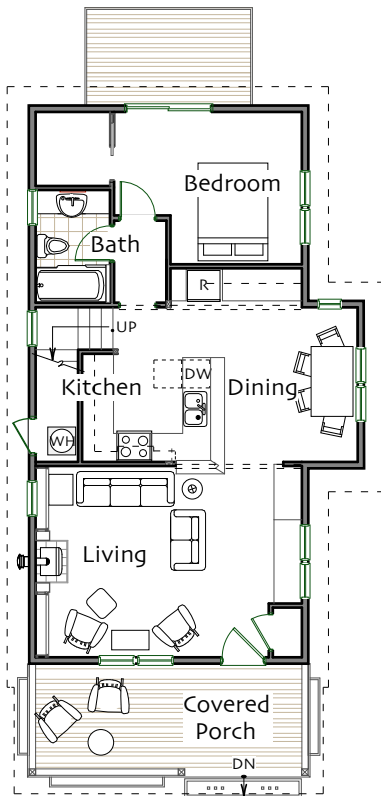
Living Room 19'-1" x 13'-6"
Kitchen 12'-7" x 11'-1"
Dining Room 10'-6" x 11'-1"
Bedroom 11'-6" x 20'-6"
Bathroom full

Second Floor >5'

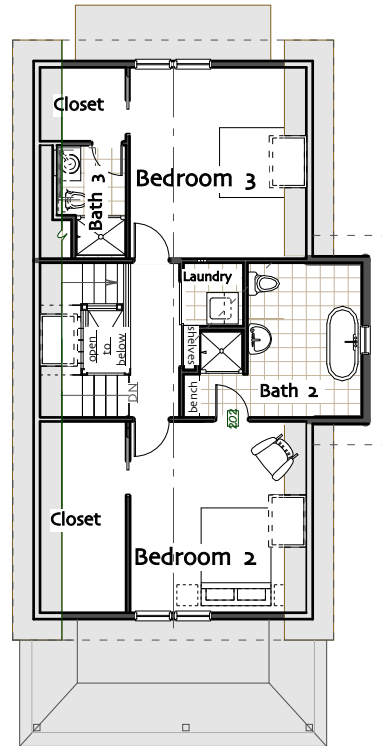
Bedroom Suite 11' x 13'-6"
Bedroom 2 11' x 13'-6"
Bathroom 1 three-quarter
Bathroom 2 full

Total Heated Area 1569 sq ft

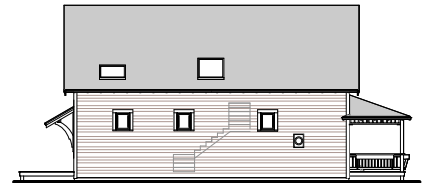
Footprint 24' x 57'



First Floor



Second Floor



© Ross Chapin Architects • Sizes are approximate / Plans are subject to change