

**First Floor**

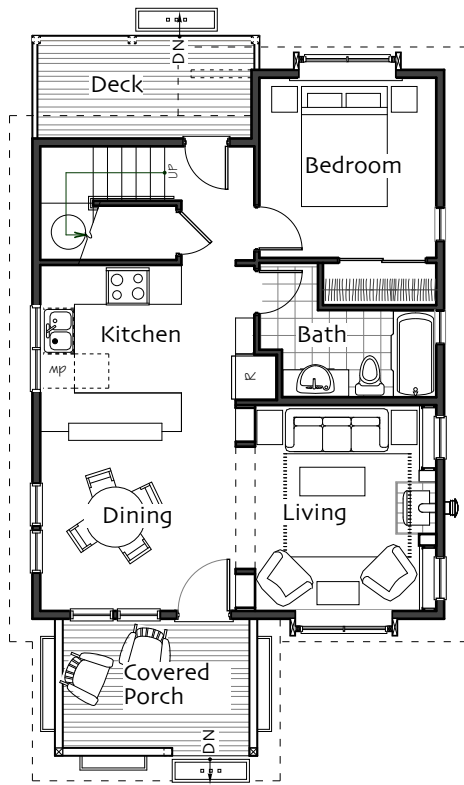
Living 12' x 11'-6"  
 Dining 10' x 11'-6"  
 Kitchen 10' x 11'-6"  
 Bedroom 10'-4" x 10'-4"  
 Bathroom full

**Second Floor >5'**

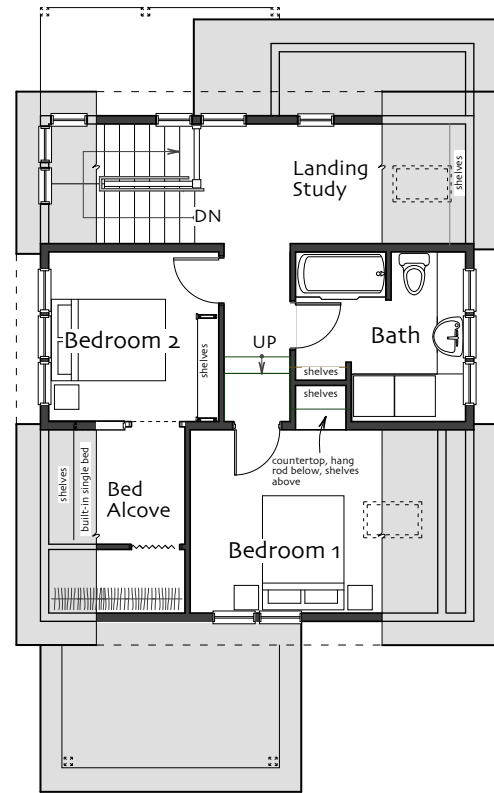
Bedroom 1 10' x 10'-8"  
 Bedroom 2 9'-5" x 9'-5"  
 Bed Alcove 4'-9" x 6'-4"  
 Landing Study 6'-6" x 7'-4"  
 Bathroom three-quarter

**Total Heated Area 1302 sf**

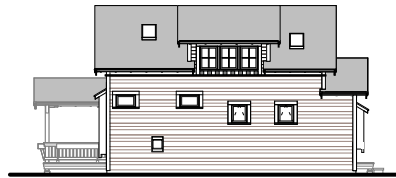
**Footprint 24' x 42'**



**First Floor**



**Second Floor**



© Ross Chapin Architects • Sizes are approximate / Plans are subject to change