

**First Floor**

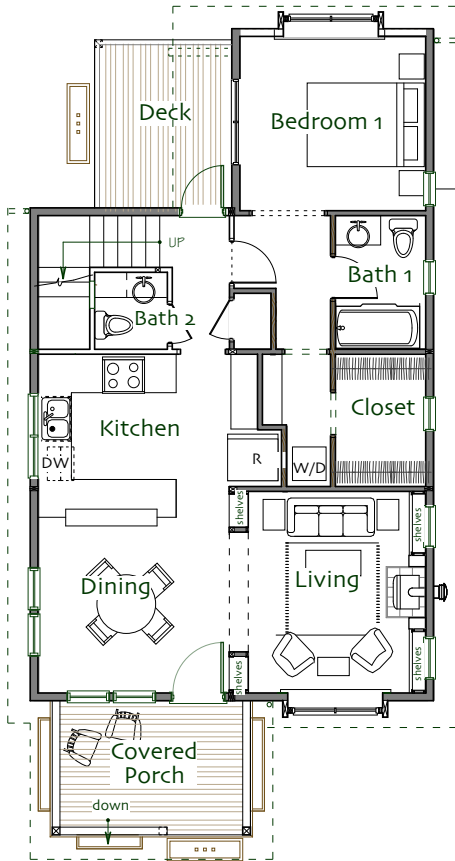
Living	11' x 12'
Dining	8'-6" x 10'-6"
Kitchen	8'-3" x 9'-9"
Bedroom 1	10'-4" x 11'
Closet	7'-10" x 5'-5"
Bathroom 1	full
Bathroom 2	half
Covered Front Porch	10'-10" x 7'-6"
Back Terrace	10' x 8'

**Second Floor >5'**

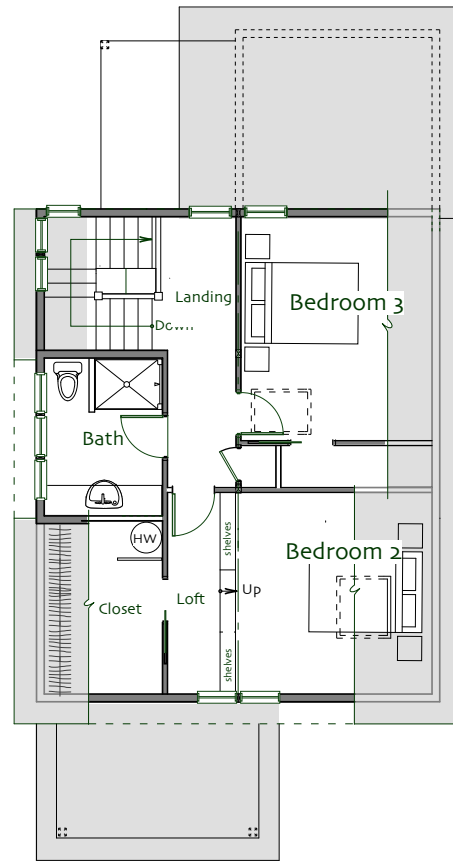
Bedroom 2	8'-6" x 12'
Bedroom 3/Study	8'-6" x 13'-4"
Bathroom	three-quarter

**Total Heated Area 1390 sf**

**Footprint 24' x 48'**



**First Floor**



**Second Floor**



© Ross Chapin Architects • Sizes are approximate / Plans are subject to change