

First Floor

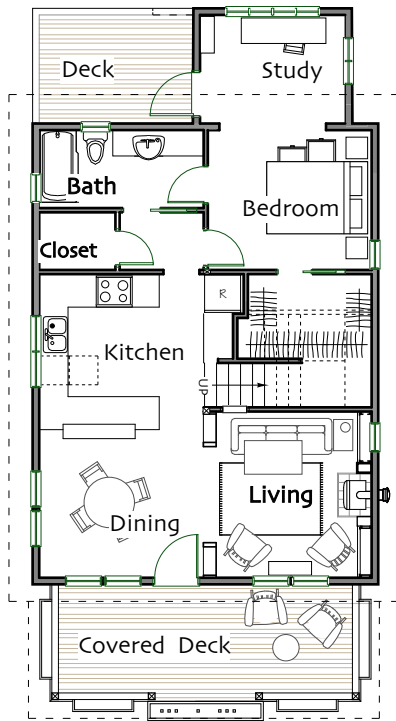
Living Room	12' x 11'-6"
Kitchen	11'-6" x 11'
Dining Room	11'-6" x 10'
Bedroom 1	11'-4 1/2" x 9'-9 1/2"
Study	8'-2" x 10'
Bathroom	full
Covered Porch	21'-6" x 8'

Second Floor >5'

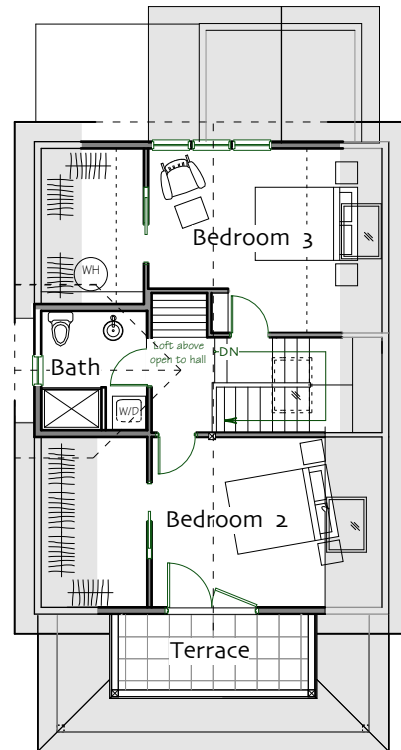
Bedroom 2	13' x 11'-6"
Bedroom 3	14' x 12'-6"
Bathroom	three quarter

Total Heated Area: 1431 sq ft

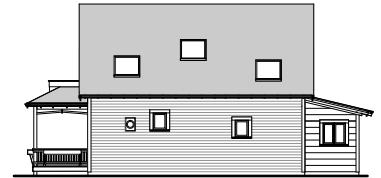
Footprint: 24' x 48'



First Floor



Second Floor



© Ross Chapin Architects • Sizes are approximate / Plans are subject to change



PO Box 230 • Langley, Washington 98260 • plans@rosschapin.com • www.rosschapin.com

Elderberry