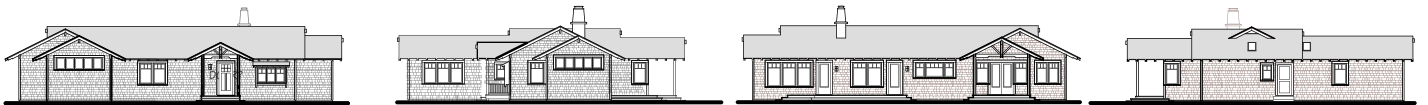
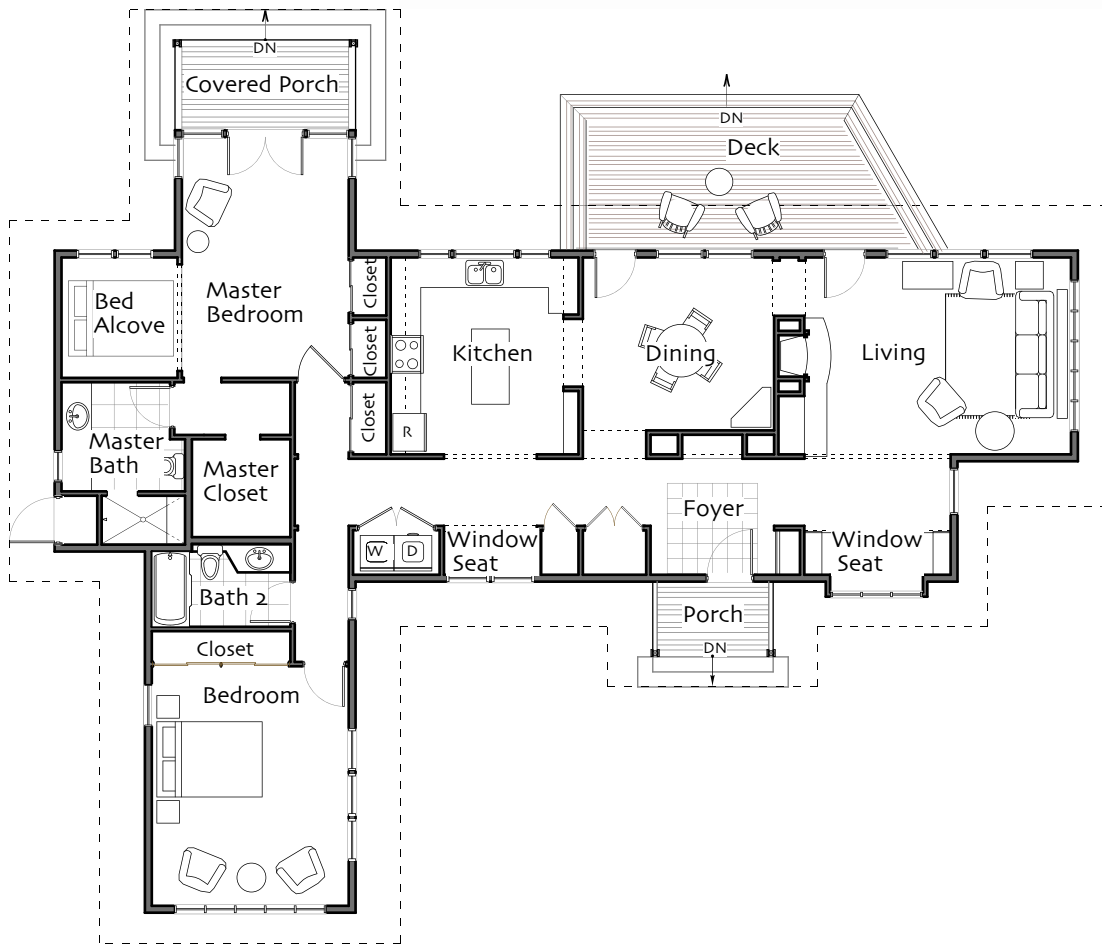


First Floor

Living Room 13' x 19'-5"
 Kitchen 12'-6" x 13'
 Dining Room 12'-8" x 13'
 Master Bedroom 11'-6" x 16'
 Bed Alcove 7'-9" x 8'
 Bedroom 13'-4" x 16'
 Master Bathroom three-quarter
 Bathroom full

Total Heated Area 1824 sq ft

Footprint 68' x 58'



© Ross Chapin Architects • Sizes are approximate / Plans are subject to change