

First Floor

Living 10'-8" x 13'
 Kitchen 14' x 9'
 Dining Alcove 6'-4" x 5'-10"
 Bedroom 1 11' x 10'
 Bathroom 1 one-half
 Bedroom 2 12' x 10'
 Bathroom 2 full

Studio above garage 11' x 19'

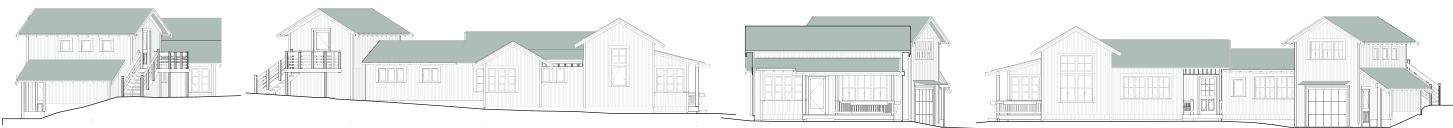
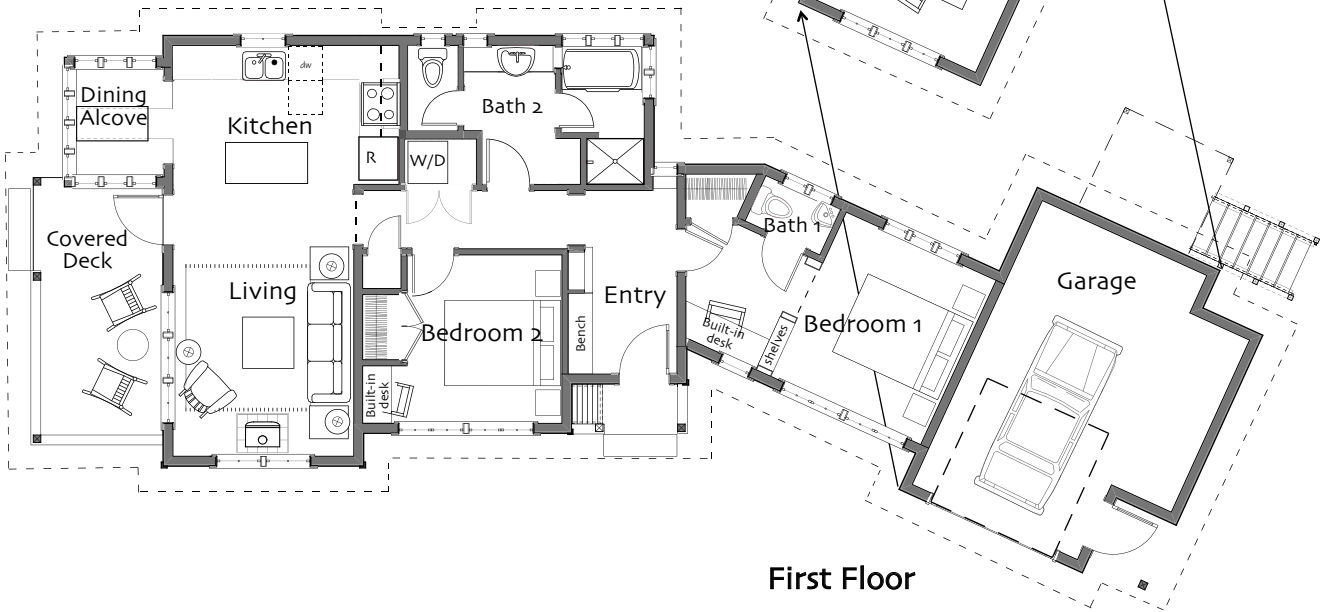
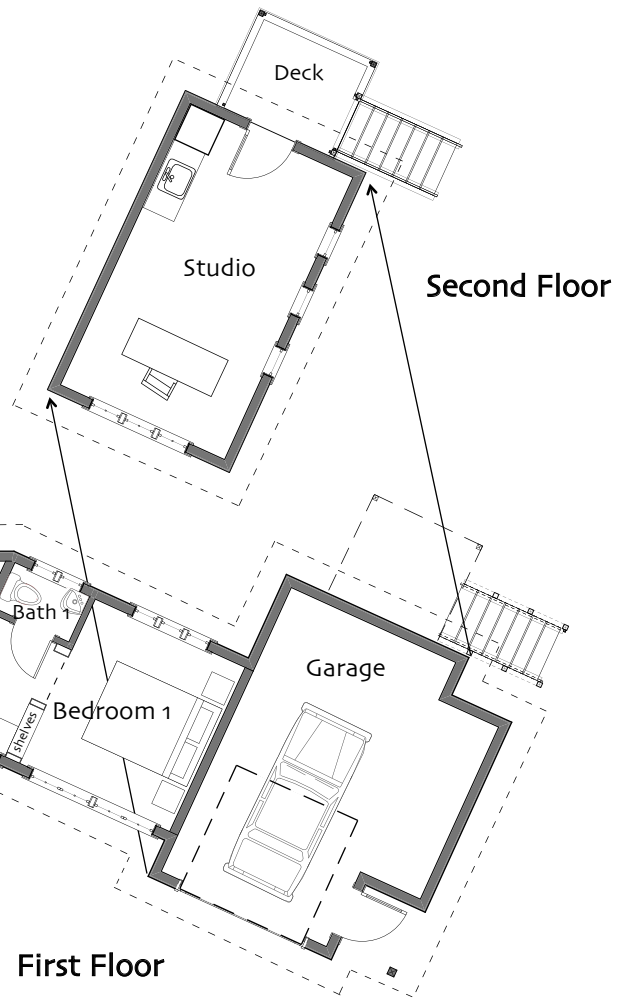
First Floor: 1018 sq ft
 Studio Above Garage: 291 sq ft

Total Heated Area 1309 sq ft

Garage 15' x 19'

Covered Porch 8' x 15'

Footprint 74'-6" x 33'



© Ross Chapin Architects • Sizes are approximate / Plans are subject to change

GoodFit
 Cottages and Small Houses

PO Box 230 • Langley, Washington 98260 • plans@rosschapin.com • www.rosschapin.com

**Crab Point
 Cottage**