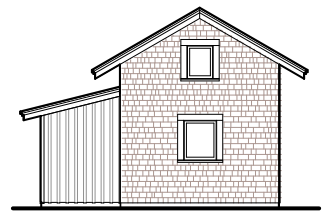
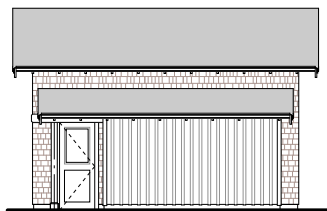
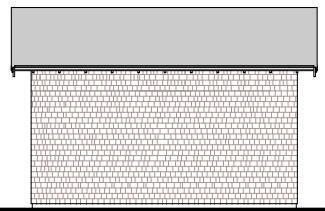
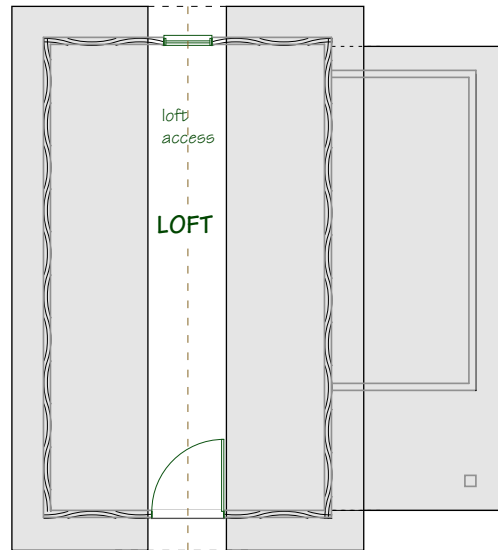
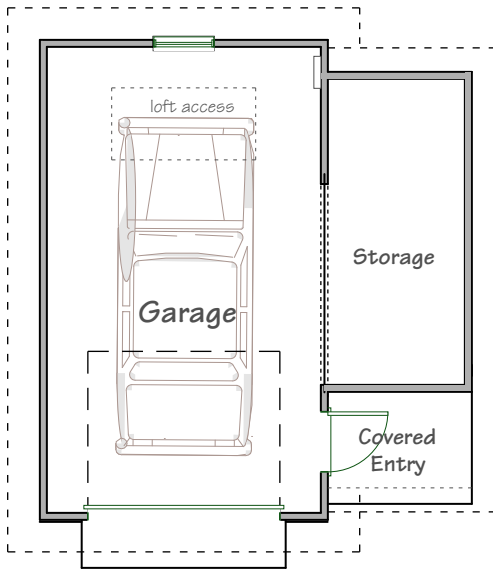


Garage Floor: 320 sf  
 Loft Floor: >5' headroom 66 sf  
 Total Area: 386 sf  
 Footprint: 18' x 20'



© Ross Chapin Architects • Sizes are approximate / Plans are subject to change

**GoodFit**  
 Cottages and Small Houses

PO Box 230 • Langley, Washington 98260 • plans@rosschapin.com • www.rosschapin.com

**Alley Cat  
 Garage**