

First Floor: 903 sf

| | |
|----------------|-----------------|
| Living Room | 15'-6" x 17'-6" |
| Kitchen/Dining | 24' x 12'-6" |
| Study | 11'-6" x 17'-6" |
| Bathroom | half w/Laundry |
| Mudroom | 10' x 8' |

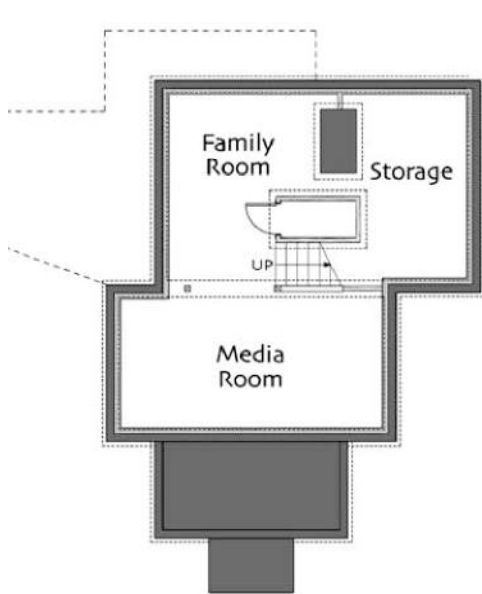
Second Floor: 670 sf

| | |
|-----------|-------------|
| Bedroom 1 | 19' x 9'-6" |
| Bedroom 2 | 19' x 9'-6" |
| Bathroom | full |

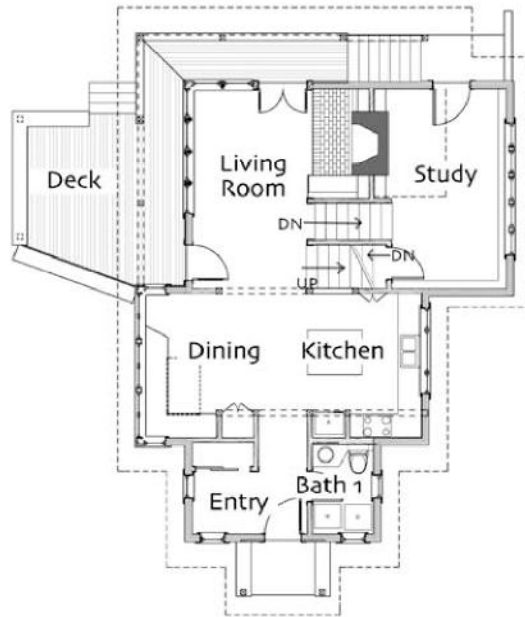
Basement: 574 sf

Total Heated Area: 2147 sq ft

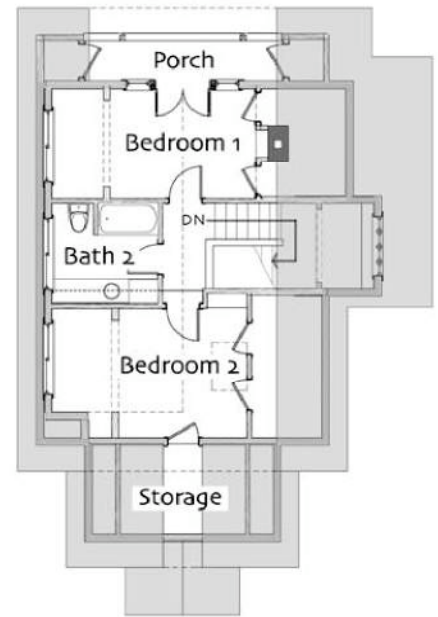
Footprint (doesn't include deck) 31' x 47'



Basement



First Floor



Second Floor



© Ross Chapin Architects • Sizes are approximate / Plans are subject to change

GoodFit
 Cottages and Small Houses

PO Box 230 • Langley, Washington 98260 • plans@rosschapin.com • www.rosschapin.com

Three Gable